

접수번호 : 17-009606-01  
(Receipt No.)



# 안전확인신고 증명서

## Confirmation Letter of Declaration

신고번호 (Application No.) : ZU10493-17001  
신고회사명 (Applicant) : Astec Electronics (Luoding) Co. Limited  
주소 (Address) : No.68 Baocheng Road East, Fucheng, Luoding  
Guangdong People's of China 527200  
제품명 (Product) : 컴퓨터용 전원공급장치(Switching power supply unit)  
기본모델명 (Basic Model) : CSU800AP-3  
파생모델명 (Series Model) : See the attachment 2  
정격/안전기준상의 모델구분 (Rating) : Input: AC 100-240 V, 50/60 Hz, 10-5 A ; DC 240 V,  
MAX. 4.5 A, Class I, (Output: +DC 12 V / MAX. 66.7 A,  
DC 12 Vsb / MAX. 3.0 A, Total output power not to exceed 800  
W)  
안전기준 (Standard) : K 60950-1 (2011-12)

본 확인신고는 제조국명 : 중국  
제조업자명 : Astec Electronics (Luoding) Co. Limited  
제조공장의 주소 : No.68 Baocheng Road East, Fucheng, Luoding Guangdong People's of China 527200  
의 제품에만 해당함

「전기용품 및 생활용품 안전관리법 시행규칙」 제27조제1항에 · 제3항 또는 제28조제2항에 따라 안전확인신고 증명서를 발급합니다.

We issue this Confirmation Letter of Declaration of the Safety Confirmation for the above appliance in accordance with Article 27(1),27(3) or 28(2) of the Electrical Appliances and Consumer Products Safety Control Act.

2017년 03월 09일  
Year month day

한국산업기술시험원장  
KOREA TESTING LABORATORY



\* 이 신고증명서는 「전기용품 및 생활용품 안전관리법」에 따른 제품의 안전성 확인에 한정된 것이며, 그 밖의 다른 법률이 적용되는 제품의 경우에는 해당 법률에 따라 추가로 인증·허가 등을 받아야 합니다.

첨부서류  
1. 전기용품의 안전관리부품 및 재질목록(List of Critical Components)(전기용품에 한정한다)  
2. 기본모델 · 파생모델의 내용(Description of the basic and series model)  
3. 안전확인신고 내용의 변경 현황(Revisions Status)

□ 첨부 1 : 전기용품의 안전관리부품 및 재질목록  
List of Critical Components

부품명(회로기호) Component(Part no.)	제조사(상표명) Manufacturer(Brand)	모델명(형식) Model(Type)	정격 또는 특성 Rating or Characteristics	인증마크 Tested by
Appliance Inlet	Rong Feng	SS-120	10 A, 250 V	VDE
(Alternate)	INALWAYS	0711-2	10 A, 250 V	ENEC
(Alternate)	TECX-UNIONS TECHNOLOGY	TU-301-S	10 A, 250 V	ENEC
Y-caps on Appliance Inlet (C98, C99)	TDK	CS, CD	Min 250 V, Max. 470 pF	VDE
(Alternate)	Murata	KY, KX	Min 250 V, Max. 470 pF	VDE
(Alternate)	Walsin	AC, AH	Min 250 V, Max. 470 pF	VDE
Fuse (F1)	Conquer	UBM-A	12.5 A, AC 250/400 V, DC 400 V	TUV
(Alternate)	Littelfuse	487	12.5 A, AC/DC 420 V	TUV
Varistor (MOV1)	Thinking	TVR14511	320 V, with min V- 1 coating	VDE
(Alternate)	Epcos	S14K320	320 V, with min V- 1 coating	VDE
X-caps (C1, C6)	Hua Jung	MKP	Min. 250 V, Max. 1 $\mu$ F	ENEC
(Alternate)	XIAMEN FARATRONIC	MKP62 or C42	Min. 250 V, Max. 1 $\mu$ F	VDE
(Alternate)	Epcos	B3293 series	Min. 250 V, Max. 1 $\mu$ F	ENEC
(Alternate)	Walsin	AC, AH	Min. 250 V, Max. 1 $\mu$ F	VDE
Line Filter (L1)	Astec/Artesyn	801-007768- XXXX(XXXX represent any alphanumeric characters that do not affect safety)	130 $^{\circ}$ C	Tested with Appliance
Inductor (L2)	Astec/Artesyn	801-007350- XXXX(XXXX represent any alphanumeric characters that do not affect safety)	130 $^{\circ}$ C	Tested with Appliance
Y-caps (C2, C3, C4, C5)	Murata	KX, KY	Max. 2.2 nF, min. 250 V	VDE
(Alternate)	Walsin	AH, AC	Max.2.2 nF, min. 250 V	VDE

부품명(회로기호) Component(Part no.)	제조사(상표명) Manufacturer(Brand)	모델명(형식) Model(Type)	정격 또는 특성 Rating or Characteristics	인증마크 Tested by
(Alternate)	TDK	CD, CS	Max.2.2 nF, min. 250 V	VDE
Y-cap (C35)	Murata	KX	Max. 1 nF, min. 250 V	VDE
(Alternate)	TDK	CD	Max. 1 nF, min. 250 V	VDE
(Alternate)	Walsin	AH, AS	Max. 1 nF, min. 250 V	VDE
Bleeding Resistors (R19, R20, R21, R22, R23, R24, R25, R64)	Interchangeable	Interchangeable	Max. 120 kΩ , Min. 0.25 W	Tested with Appliance
Power Transformer (T1, T2)	Astec/Artesyn	801-004512- XXXX(XXXX represent any alphanumeric characters that do not affect safety)	Class F	Tested with Appliance
Optocoupler (U10)	Everlight	EL1017	Min. 5 000 V isolation	VDE
(Alternate)	Lite-on	LTV-1007	Min. 5 000 V isolation	VDE
Transformer (T400)	Astec/Artesyn	801-005834- XXXX(XXXX represent any alphanumeric characters that do not affect safety)	Class F	Tested with Appliance
Optocoupler (U414, U415, U416, U417)	Everlight	EL1017	Min. 5 000 V isolation	VDE
(Alternate)	Lite-on	LTV-1007	Min. 5 000 V isolation	VDE
Transformer (T900)	Astec/Artesyn	801-007758- XXXX(XXXX represent any alphanumeric characters that do not affect safety)	Class F	Tested with Appliance
Fan	AVC	DBTD0428B2G	DC 12 V, 1.50 A	TUV
(Alternate)	SUNON	PF40281BX- Q230-S99	DC 12 V, 10.80 W	TUV
PCB	Interchangeable	Interchangeable	Min V-0, min. 130 °C	UL
Enclosure	Interchangeable	Interchangeable	Metal	-

부품명(회로기호) Component(Part no.)	제조사(상표명) Manufacturer(Brand)	모델명(형식) Model(Type)	정격 또는 특성 Rating or Characteristics	인증마크 Tested by
----------------------------------	---------------------------------	------------------------	---------------------------------------	-------------------

유의사항 (Attention) :

1. 안전관리부품은 전기적인 안전에 직접적인 영향을 주는 부품으로서 안전인증기관이 정기공장검사 시 확인 관리 하는 사항입니다. 따라서 상기목록에 기재된 사항을 변경하거나 또는 복수등재를 원하시는 경우는 안전인증기관에 인증변경신청을 하여야 합니다.

*As the "Critical components" are parts in directly related with safety, these components shall be checked during a factory inspection by the certification body. In case of applying multiful listing or changing the items above, the certification revision shall be applied.*

2. 인증변경신청 없이 임의로 변경하는 경우는, 전기용품 및 생활용품 안전관리법 시행규칙 제 20 조제 1 항 또는 제 36 조제 1 항 규정에 의한 안전인증 취소 혹은 안전확인신고 효력상실 사유가 됨을 유의하시기 바랍니다.

*The Safety Certification will be cancelled under the Article 20(1), 36(1) of the Enforcement Rule of the Electrical appliances and Consumer Products Safety Control Act if the contents of the Certification is altered without our authorization.*

□ 첨부 2 : 기본모델 · 파생모델의 내용

Description of the basic and series model

파생모델명 Derivative model	기본모델과의 차이점 Differences between the basic and derivative model(s)
CSU800AP-3-001	Same as basic model except for designation and reversed airflow.
CSU800AP-3-100	Same as basic model except for designation.
CSU800AP-3-200	Same as basic model except for designation.
CSU800AP-3-300	Same as basic model except for designation.
CSU800AP-3-400	Same as basic model except for designation.
CSU800AP-3-500	Same as basic model except for designation.
CSU800AP-3-600	Same as basic model except for designation.
CSU800AP-3-700	Same as basic model except for designation.
CSU800AP-3-800	Same as basic model except for designation.
CSU800AP-3-900	Same as basic model except for designation.
<b>제품특기사항 및 시험조건</b> <b>Remarks &amp; Test conditions</b>	
<p>1. Review Report No. : 17-009606-01 (2017.03.08)</p> <p>2. Product Description</p> <ul style="list-style-type: none"> <li>- Measured power consumption: 967.27 W</li> <li>- Class of equipment: Class I</li> <li>- Protection against ingress of water: IPX0</li> <li>- Mass of equipment (kg): 0.86 kg</li> </ul>	
<p>□ 본 제품의 검토내용에 관하여 문의하실 사항이 있으시면 아래 연락처로 문의하시기 바랍니다.          검토담당자 : 인증산업본부 인증심사센터 최 문 석 / 02-860-1420</p> <p>□ If you have any question on product review, please contact the person below :          Job holder : Certification Business Division Certification Evaluation Center , Moon-seok Choi / +82 2 860-1420</p>	

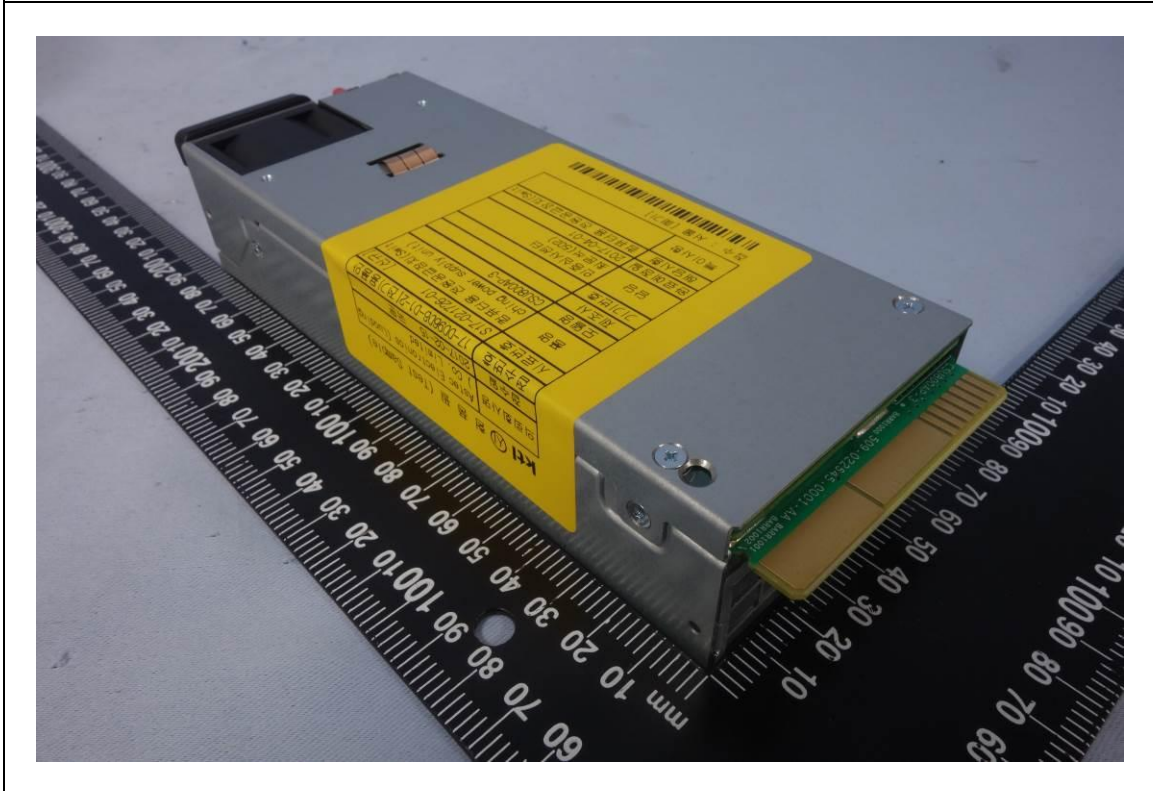
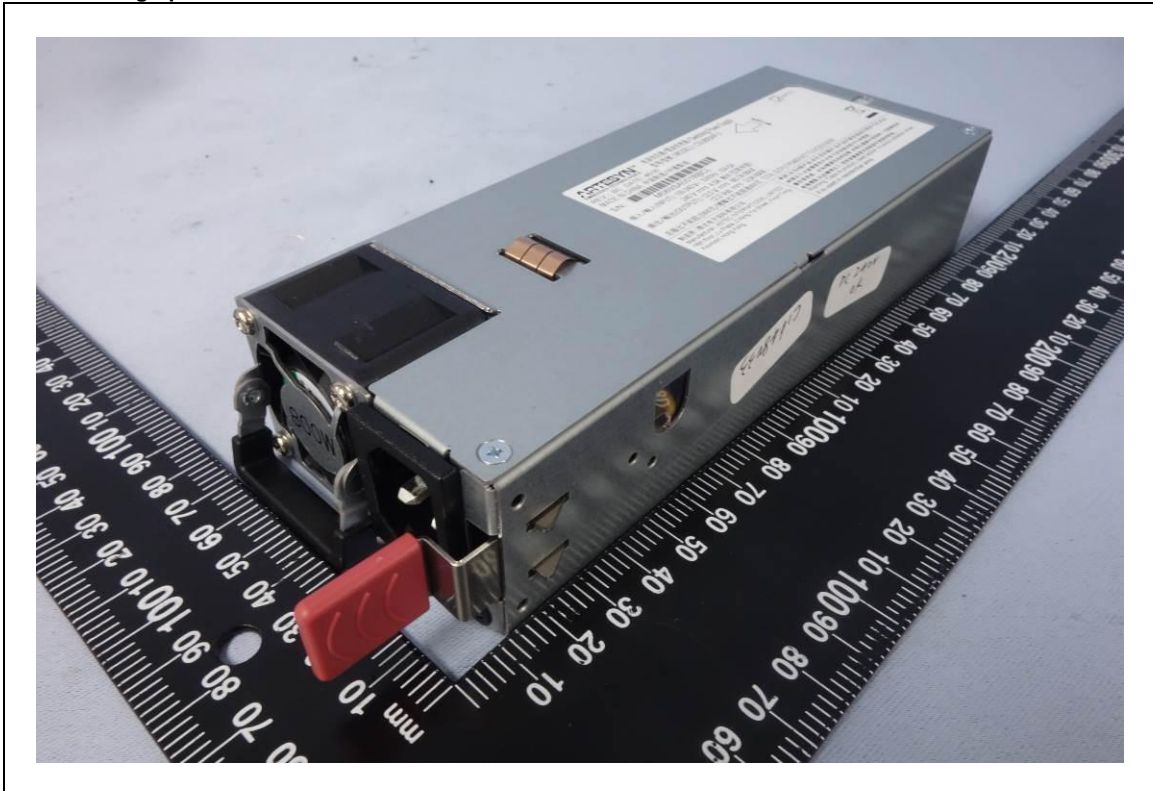
FP511-09-00

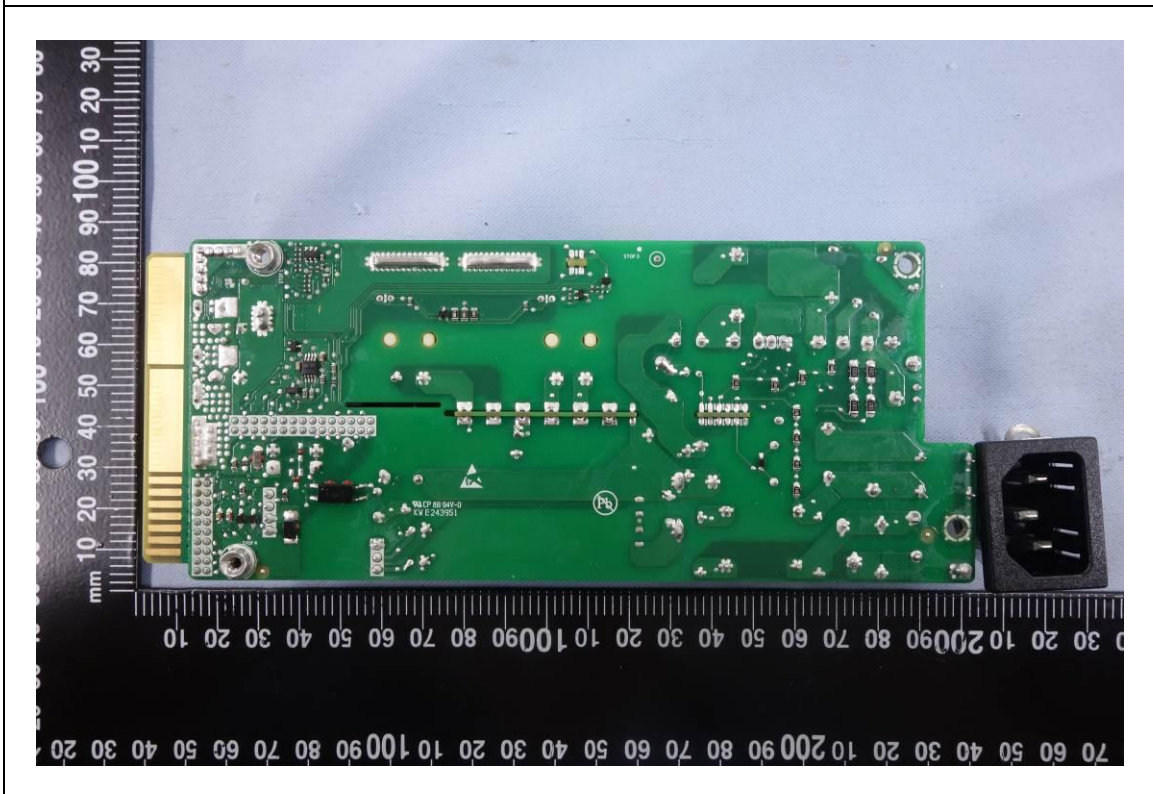
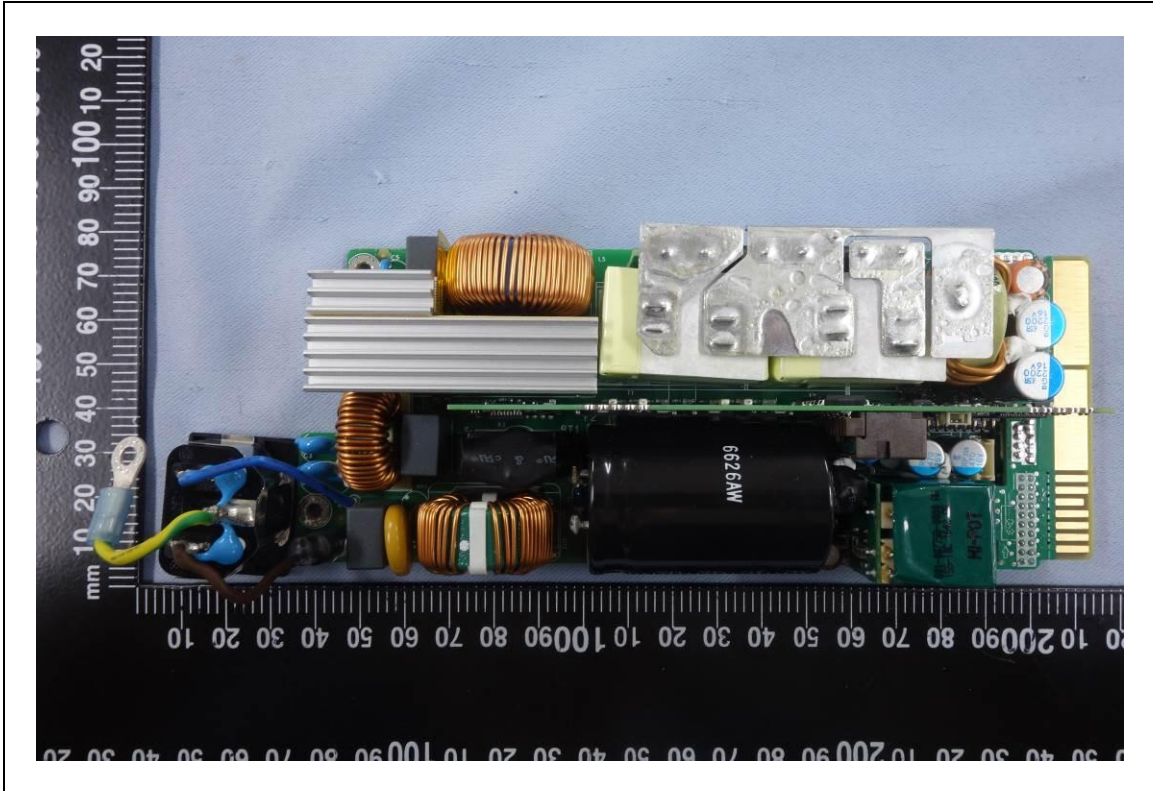
**첨부 3 : 안전확인신고 내용의 변경 현황**  
Revisions Status

변경발급 내용 Contents of Certificate Revisions
Not applicable

FP511-11-00

첨부 : 제품사진  
Photographs





FP511-10-00